

# DYNOBULK®

## Surface Blast Equipment



DYNOBULK®

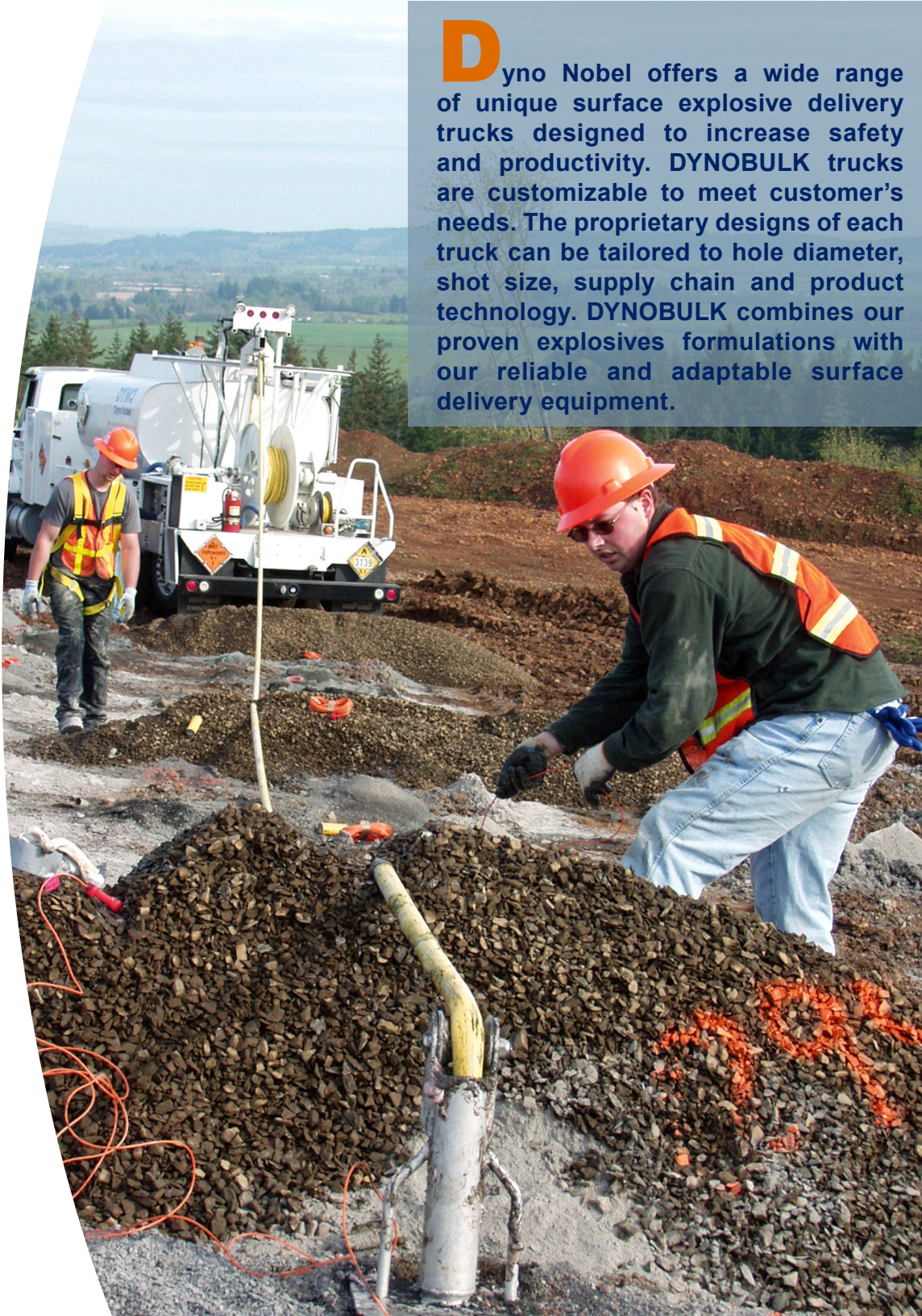
DYNO®  
Dyno Nobel

Groundbreaking Performance™

**D**yno Nobel offers a wide range of unique surface explosive delivery trucks designed to increase safety and productivity. DYNOBULK trucks are customizable to meet customer's needs. The proprietary designs of each truck can be tailored to hole diameter, shot size, supply chain and product technology. DYNOBULK combines our proven explosives formulations with our reliable and adaptable surface delivery equipment.

## **BENEFITS OF DYNOBULK**

- Built-in safety systems
- Optimized loading rates
- Automated product loading
- Reduced manual product handling
- Flexible and efficient design
- Application customizable
- Inventory management record keeping
- Built with mining in mind
- Designed for all climates





### DYNOBULK ANFO

- Applications: dry blast holes in quarry, coal and metal mines
- Products: ANFO only
- Capacity: 10–20 tons
- Loading Rates: 500–2,000 lbs/min

### DYNOBULK HEAVY

- Applications: dry or dewatered blast holes in quarry, coal and metal mines
- Products: ANFO, TITAN® emulsion and augered blends
- Capacity: 10–20 tons
- Loading Rates: 700–1,000 lbs/min



### DYNOBULK TRIPLE

- Applications: dry or wet blast holes in quarry, coal and metal mines
- Products: augered and pumped TITAN blends, TITAN emulsion and ANFO
- Capacity: 10–20 tons
- Loading Rates: 400–1,200 lbs/min



### DYNOBULK XL

- Applications: proprietary technology to mix TITAN emulsion on site for quarry, coal and metal mines
- Products: TITAN XL 1000, TITAN 1000ΔE, TITAN 1000 LD and TITAN 1000 SD
- Capacity: 10–20 tons
- Loading Rates: 300–2,000 lbs/min
- DIFFERENTIAL ENERGY™ capable



### DYNOBULK SME

- Applications: patented technology to make and mix TITAN SME emulsion on-site for quarry, coal and metal mines
- Products: TITAN emulsion
- Capacity: 10–20 tons
- Loading Rates: 300–400 lbs/min
- DIFFERENTIAL ENERGY™ capable



800-732-7534

[www.dynonobel.com](http://www.dynonobel.com)

**DYNO<sup>®</sup>**  
**Dyno Nobel**

**Groundbreaking Performance™**